

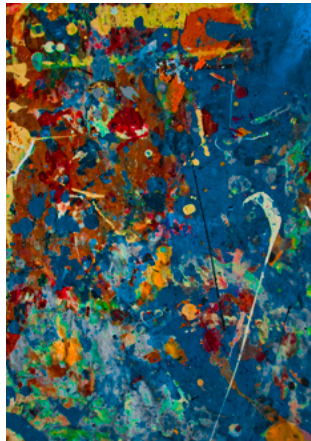


WILLIAM KING MUSEUM OF ART

JULY NEWS

Calendar of Events

July 3	5-9 p.m.	First Thursday: Open House
July 4		Museum closed for Independence Day
August 1		Virginia Highlands Festival begins
August 2	10 a.m. - 5 p.m.	Opening Day for <i>An American Turning Point: The Civil War in Virginia</i>
August 7	6-8 p.m.	First Thursday: Opening Reception for <i>An American Turning Point: The Civil War in Virginia</i>
August 10	6 p.m.	Symphony of the Mountains Chamber Ensemble Concert



Artist by Trade: Independent Projects by Barter Theatre Creatives March 7 - August 17, 2014

Panoramic Gallery: The Constant Artist, Connie Bundy June 3 - July 27, 2014

SPECIAL EVENTS

The Symphony of the Mountains Chamber Ensemble will perform a special concert at 6 p.m. on August 10th followed by wine and hors d'oeuvres. The repertoire will include music related to the Civil War to compliment our *An American Turning Point* exhibition at WKMA. Tickets are limited. \$20 in advance at the museum or online and \$25 at the door.

EXTENDED FORECAST

Cavaliers of Nowhere: Photographs by Tammy Mercure and Dawn Roe
Opening Reception First Thursday, September 4 from 6-8 p.m.
September 5, 2014 – January 18, 2015

Mapping the Cosmos: Jan Hurt and a Constellation of Artists
Opening Reception First Thursday, February 5 from 6-8 p.m.
February 6 – May 31, 2015

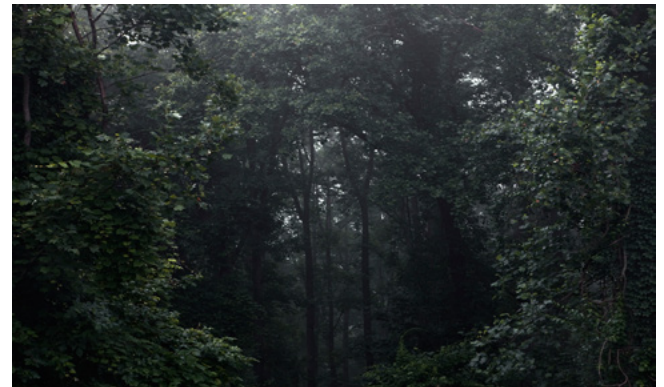
COMING SOON TO WKMA . . .



Cavaliers of Nowhere: Photographs by Tammy Mercure and Dawn Roe

Opening Reception First Thursday, September 4 from 6-8 p.m.
September 5, 2014 – January 18, 2015
United Company Contemporary Regional Gallery

This two-person exhibition connects contemporary photographers Tammy Mercure of Nashville, Tennessee and Dawn Roe of Asheville, North Carolina. Mercure has been photographing the louder people and places of the Southeast since 2008 in her series entitled *Cavaliers I & II*. She consistently captures



a wayward vision of Appalachia in up-close portraits of low-culture, regional provincialism, and burning recklessness. In quieter places, Roe's landscapes document overgrown outdoor spaces in her series *This is Nowhere*. The swarms of kudzu, fallen branches, and unpopulated locales deliver a haunting sense of isolation and abandonment that echoes throughout the Appalachian Mountains. Through these ongoing photographic projects by Mercure and Roe, this exhibition examines the distinct social and physical realities of rural Appalachia.

For information, please visit us on the web at www.williamkingmuseum.org or like us on Facebook at www.facebook.com/williamkingmuseum.

AN AMERICAN TURNING POINT PROGRAMS

Civil War Spirit Tours by Donnamarie Emmert:

Friday, August 1; Saturday, August 2; Wednesday, August 6; Friday, August 8; and Saturday, August 9.
All begin at 7:30 p.m., \$15 per person.

August 8-10: **Virginia's Civil War 150 HistoryMobile**
(located in Depot Square, Abingdon; free)

August 30, 1-4 p.m.: **Luke Gilly living history reenactment**
(free)

September 18, 7 p.m.: **Gallery talk by Andrew Talkov**
(\$5, free for members)

October 6, 7 p.m.: **Film Screening: Freedom**
(\$5, free for members)

October 20, 7 p.m.: **Film Screening: This World**
(\$5, free for members)

December 18, 7 p.m.: **Lecture: War Comes to Abingdon by Michael Shaffer**
(\$5, free for members)

